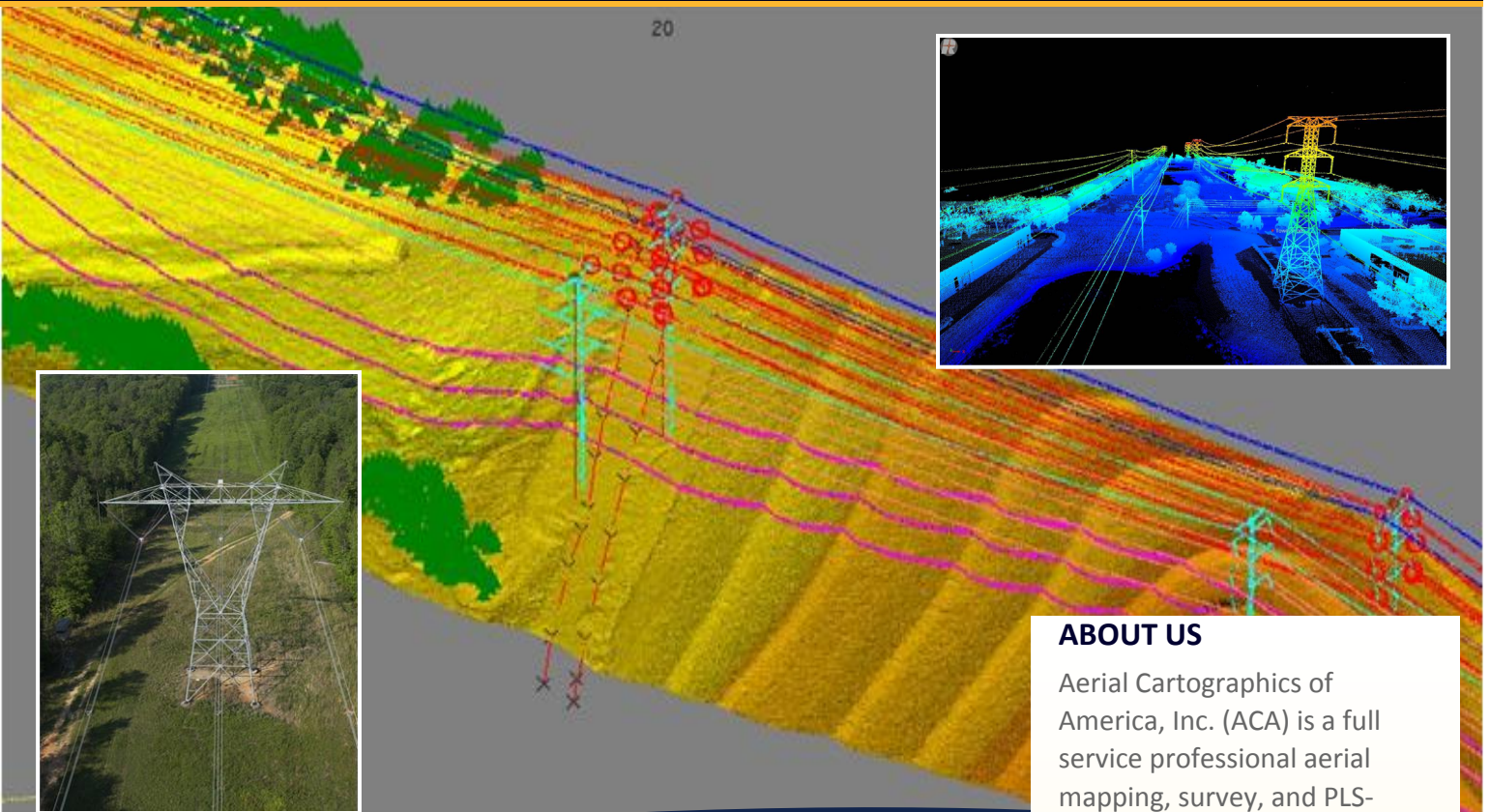


NERC MANDATE COMPLIANCE

Power Line Mapping



AERIAL CARTOGRAPHICS OF AMERICA, INC.



ABOUT US

Aerial Cartographics of America, Inc. (ACA) is a full service professional aerial mapping, survey, and PLS-CADD Modeling firm located in Orlando, FL. Established in 1973, ACA has built a reputation as one of the premier mapping firms excelling at precision mapping and modeling products. In the last few years ACA has expanded its product offerings beyond mapping to include PLS-CADD Method 1 Modeling with Finite Element Analysis to create the most accurate design models and clearance violation reports for Utilities

APPLICATIONS:

- NERC Mandate
- Transmission Line Design
- Vegetation Maintenance
- Solar/Wind Farm Design
- Power Plant Design/Expansion

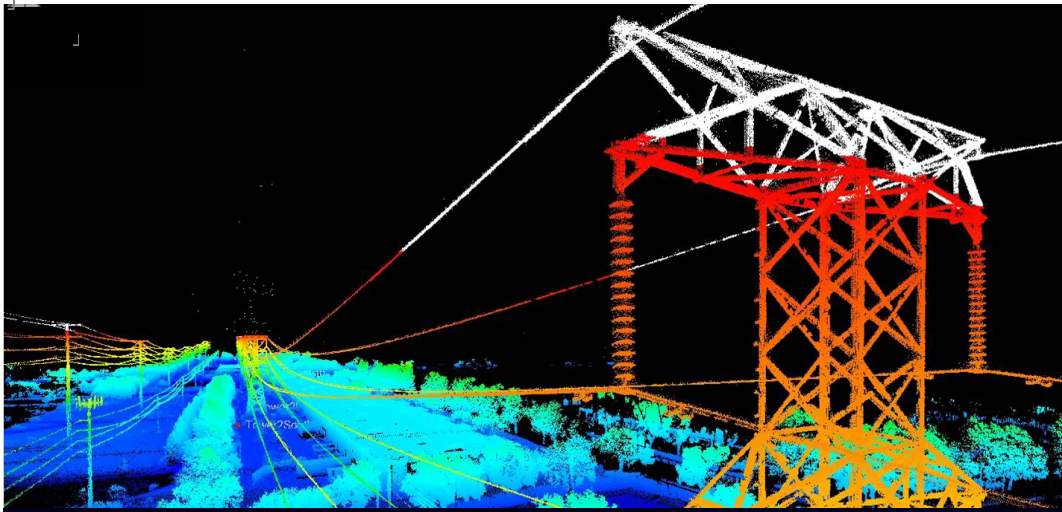
TRANSMISSION LINE MAPPING & PLS-CADD MODELING

ACA is among the nation's leading experts in Power Line Mapping and PLS-CADD Modeling to meet NERC Mandate Requirements. ACA provides high resolution Aerial Data and Imagery Acquisition, Ground Survey, Mapping, Weather Station Data, PLS-CADD Modeling, Finite Element Analysis, Clearance Violation Reporting, Facility Surveys, and Auto-CAD Plan and Profile Sheets to support design, operational compliance, and vegetation maintenance needs.

ACA provides advanced LiDAR mapping solutions using the latest Riegl LMS-Q680i 400Khz Full Waveform Sensor, Leica RCD 30 60mp RGBI Medium Format Camera, UCX Large Format Mapping Camera, 18mp

Digital Oblique Imagery and High Definition Video. Using helicopter and fixed wing aircraft ACA provides better than +/- 0.25 ft X,Y,Z accurate 3D surface models of the Ground, Structures, Points of Attachment, Conductors and Cable Crossings, Vegetation, Danger Trees, Encroachments, Roads and all specified Feature Codes.

Using the IEEE 738-2006 approach to conductor temperature calculations, ACA uniquely matches the collected LiDAR data with the Collected Weather Station data to achieve the most accurate temperature, tension, and sag model for each conductor span for NESC clearance analysis.



SPECIALIZED EQUIPMENT

Specialized Systems to Meet Utility Needs



Fully Equipped Helicopter



Cessna 208



"FALCON"

*Fully Automated LIDAR Collection
30 -50 pts/sq meter Orthos & Obliques*



*Simultaneous Collection
LiDAR, 24 pts/sq meter
color/color IR 2" resolution
hyperspectral Data*



*RCD 30 60MP RGBI
Medium format color/IR
digital camera for
corridor mapping*

MAPPING & MODELING SERVICES

Aerial Imaging & Elevation Data Acquisition

- Digital Aerial Imaging
- LiDAR Acquisition
- Simultaneous Imagery and LiDAR Acquisition
- Weather Data collection

Photogrammetric Mapping

- Digital Mapping (Aerial Triangulation/Stereo compilation/ Feature Extraction)
- Digital Terrain Modeling
- LiDAR Processing
- Digital Orthophoto Production
- 3D Surface Models, Bare Earth, Structures, Vegetation
- Volumetric Analysis

PLS-CADD

- Ruling Span
- Method 1
- Finite Element Analysis
- IEEE 738-2006
- NESC Clearance Analysis
- Danger Tree Analysis
- 3D Species Delineation
- Facility Surveys
- Plans & Profiles

**WE ARE THE COMPLETE
MAPPING, PLS-CADD
MODELING & ANALYSIS
SOLUTION FOR YOUR
NERC/NESC COMPLIANCE
REQUIREMENTS**

