

OLYMPUS®

Your Vision, Our Future

MICROSCOPE DIGITAL CAMERA

DP12

3.34 MILLION PIXEL RESOLUTION

The new compact solution for professional digital imaging in microscopy



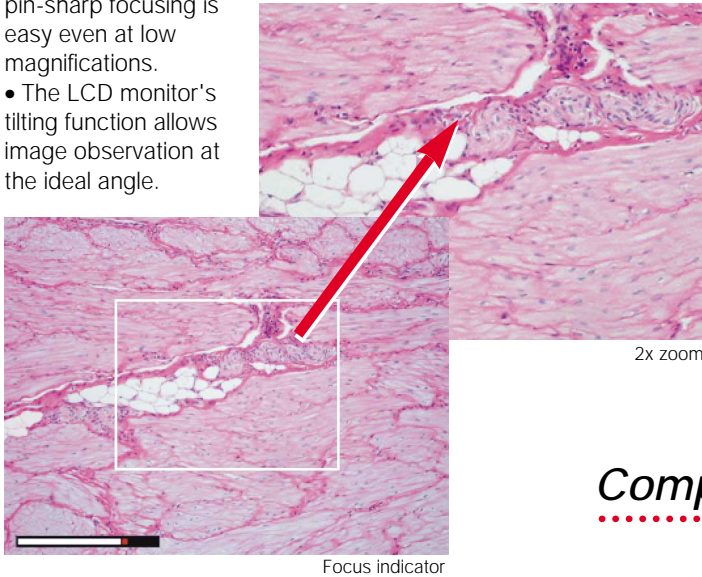
Compact, easy-to-use design and excellent

High-resolution 3.34 million pixel imaging

- The DP12 is equipped with a 1/1.8 inch interlaced scan CCD with 3.34M pixel resolution which ensures highly precise digital images. Even very fine structures of the specimen are clearly imaged. The maximum image resolution is 2048 x 1536 pixels.

Easy Focusing

- 3.5" LCD monitor provides real-time display of large, easy-to-see images for faster, more accurate focusing and framing.
- With the focusing indicator and a 2 x electronic zoom function, pin-sharp focusing is easy even at low magnifications.
- The LCD monitor's tilting function allows image observation at the ideal angle.

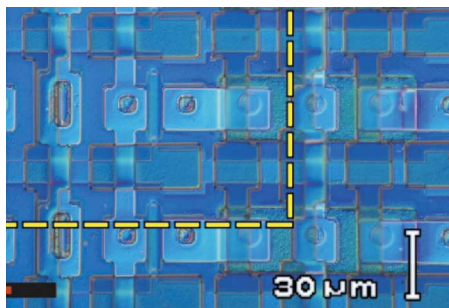


Focus indicator

2x zoom

Direct scale bar imprint

- A calibrated scale bar can be superimposed on the image in either a horizontal or vertical orientation. The scale bar can be saved and printed with the image.



Scale



All controls near the operators' hand

Compact control unit

(W) 131mm

Multi-functional, compact control unit

- Compact and robust stand alone camera for use with or without a PC.
- The camera head is equipped with a universal C-mount thread allowing attachment to almost any microscope.
- The 200,000 pixel 3.5" LCD monitor is integrated in the control pad forming a compact unit which uses desk space more effectively.
- The tiltable LCD monitor also functions as a protective lid for the control unit.
- The camera is operated entirely from the control unit. Users do not need to touch the camera head or the microscope for exposure.

image clarity.



◀ Actual Size

Large 3.5" LCD monitor

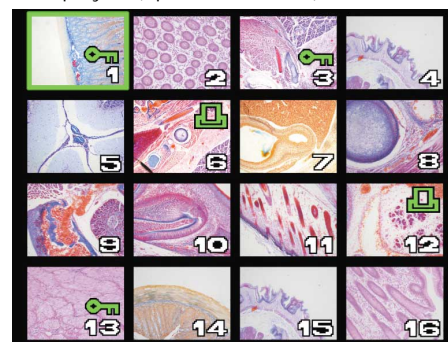
Maximum 128MB storage via SmartMedia

Easy adjustment for optimum image quality

- Three different white balance modes are available for optimal color representation: One touch, automatic and manual.
- Exposure metering is selectable between 1% spot and 30% average metering.
- Users can choose automatic or manual exposure modes.

Large LCD monitor for on-screen image selection

- Date, time, shutter speed and file name are displayed and stored together with the microscope image.
- Acquired images can be displayed (up to 16 at once) on the screen.
- Images can be protected on the SmartMedia card or assigned for subsequent printing.
- Image data is retained on the SmartMedia card when the power is turned off.



16-frame display



Software for image download and camera control

- The control unit is equipped with a high-speed USB interface. By using the optional software DP12-BSW images can easily be downloaded directly from the camera control unit to the PC. Additional application software for PC control of the camera is optional and varies by region.
- The SmartMedia card is removable, allowing images to be easily transferred to any PC using optional USB and PCMCIA SmartMedia reader.

Other features

DP-TRAD

The tripod mount for macro photography is optionally available. (the use on a tripod requires a macro lens which is not included)

Video signal output*

The control unit includes a video-output port for NTSC or PAL signals, allowing image display on an external video monitor.

* Please consult your nearest Olympus dealer for appropriate external video monitors.

DP12 basic unit



Control unit



- 1 Display 2 Camera mode
- 3 Measuring area set-up/print instruction
- 4 Image erase 5 Menu display 6 AE lock/protect
- 7 Display image menu selection 8 EXPOSE
- 9 OTWB/INFO 10 SET/OK

DP12 specifications

Image sensor	1 / 1.8 inch interlace scan CCD with 3.34 Mpixel (effective 3.24 Mpixel)
Image recording	Metering system: 1% spot, 30% average Exposure control: Automatic, manual, AE lock Exposure time: Automatic 1/4,000 sec - 1/2 sec, Manual 1/4,000 sec - 8 sec White balance (3 modes): Full auto, one touch, manual Recording media: 3.3V SmartMedia (SSFDC) *The SmartMedia card is not included Resolution: SHQ (TIFF) 2048x1536 (Approx. 9.4MB) SHQ (JPEG) 2048x1536 (Approx. 2.3MB) HQ (JPEG) 2048x1536 (Approx. 790KB) SQ1 (JPEG) 1024x668 (Approx. 580KB) SQ2 (JPEG) 640x480 (Approx. 230KB)
Image display	3.5 inch 200,000 pixel TFT colour LCD Live image display: max. 30 frames/sec image magnifications 1x, 2x (Electronic zoom) Reproductive image display: 30 frames/sec Image magnifications 1/16x, 1/9x, 1/4x, 1x, 2x, 4x
I/O	DC input Data Output: USB Video output: Composite (NTSC/PAL) SSFDC slot Exposure adjustment: ±2EV (1/3 increments)

DP12-BSW software: System Requirements

PC	Computer: IBM PC/AT Compatible
	Operating System: Microsoft Windows 98SE/Me/2000 Pro./XP Pro. * For only preinstall
	CPU: Pentium 133MHz or faster
	RAM: More than 64MB RAM
	Hard disk space: More than 20MB
	I/O device: USB port, CD-ROM
	Display monitor: 800x600 pixel resolution with 256 color or better
	USB controller manufactured by Intel is recommended

DP12 dimensions

(unit: mm)

<h4>Camara unit</h4>	<h4>Control unit</h4>
----------------------	-----------------------

*Monitor images are simulated.

*All brands are trademarks or registered trademarks of their respective owners.

Specifications are subject to change without any obligation on the part of the manufacturer.



OLYMPUS

OLYMPUS CORPORATION
Shinjuku Monolith, 3-1, Nishi Shinjuku 2-chome, Shinjuku-ku, Tokyo, Japan
OLYMPUS EUROPA GMBH
Postfach 10 49 08, 20034, Hamburg, Germany
OLYMPUS AMERICA INC. (FOR LIFE SCIENCE/MEDICAL APPLICATIONS)
Two Corporate Center Drive, Melville, NY 11747-3157, U.S.A.
OLYMPUS INDUSTRIAL AMERICA, INC. (FOR INDUSTRIAL APPLICATIONS)
One Corporate Drive, Orangeburg, NY 10962, U.S.A.
OLYMPUS SINGAPORE PTE LTD.
491B River Valley Road, #12-01/04 Valley Point Office Tower, Singapore 248373
OLYMPUS UK LTD.
2-8 Honduas Street, London EC1Y 0TX, United Kingdom.

OLYMPUS AUSTRALIA PTY. LTD.
31 Gilby Road, Mt. Waverley, VIC 3149, Melbourne, Australia.
OLYMPUS LATIN AMERICA, INC.
6100 Blue Lagoon Drive, Suite 390 Miami, FL 33126-2087, U.S.A.



This catalog is printed by enviromentally-friendly waterless printing system with soy ink.

www.olympus.com

Printed in Japan M404E-1004B