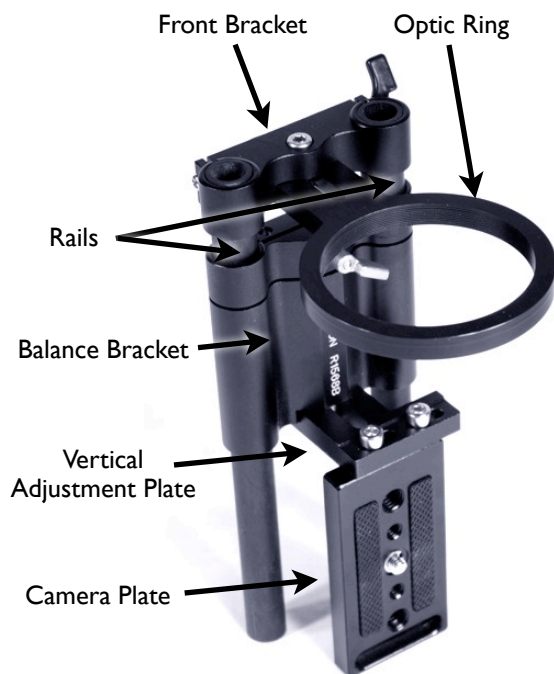


Part Identification Guide



Specifications

- Rail Diameter: 15mm
- Rail Length: 200mm
- Rail Spacing: 60mm (center to center)
- Rail Wall Thickness: 1.8mm
- Rail Material: Carbon fiber
- Length Adjustment: 150mm
- Front Bracket Height Adjustment: 25mm
- Camera Height Adjustment: 25mm
- Camera Horizontal Adjustment: 60mm
- Mounting Holes: 1/4"-20 and 3/8"-16
- Optic Ring Thread: $\varnothing 67\text{mm} \times 0.75$
- Plate Material: Aluminum
- Hex Wrench Size: 4mm or 5/32"

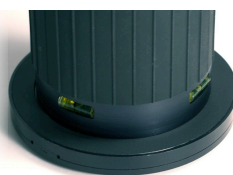
Accessories

The GoPano Adjustable Camera Mount is compatible with standard 15mm diameter, 60mm spacing rail mount components. This is a common mounting system used for video production, and several companies offer compatible products. If you can't get your mount to work for your camera, you may be able to add third party products for a custom solution.

The GoPano Adjustable Camera Mount is designed to work with other GoPano accessories:

GoPano Glass Cylinder Enclosure →

- Protects GoPano from weather, dirt and debris.
- Reduces vibrations caused by moving camera platforms.



← *GoPano Magnetic Quick Release Adapter*

- Quickly remove or replace your GoPano optic from the camera mount.

You can purchase these and other GoPano accessories from www.EyeSee360.com and our authorized resellers.

GoPano Adjustable Camera Mount



Thanks for your purchase. This is your *GoPano Adjustable Camera Mount*.

Your GoPano Adjustable Camera Mount allows you to use a GoPano Panoramic Optic with many digital cameras and camcorders that offer a standard tripod mount. It is particularly well suited for SLR cameras to support the GoPano optic without placing weight on the camera's lens.

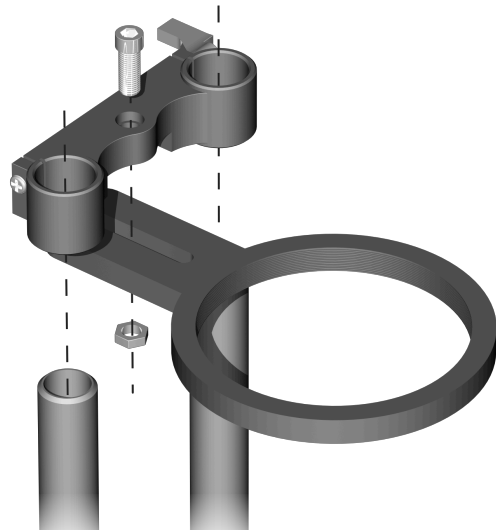


www.EyeSee360.com

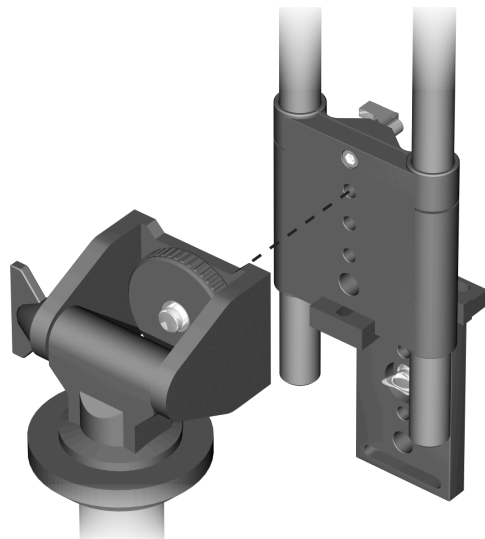
GoPano and EyeSee360 are registered trademarks of EyeSee360, Inc.
© 2009 by EyeSee360, Inc.

Assembling your Mount

Use the included hex wrench to attach the optic ring onto the mount as shown. You only need to tighten once you have fitted the mount for your camera.



Attach the adjustable camera mount to your tripod head with one of the threaded mounting holes on the back of the balance bracket. Both $\frac{1}{4}$ " and $\frac{3}{16}$ " threads are available. Use one of the upper holes to leave the most clearance for your tripod.



Fit your Camera

Adjust the position of the camera plate so that the optic is centered. Check the viewfinder and fill as much of the frame as possible without cropping.

For fixed focal length lenses, slide the balance bracket along the rails until the mirror fills the frame. Use GoPano Spacer Rings to add distance between the optic and camera if needed. Keep the front of the lens close to the bottom of the optic to prevent stray light entering the camera.



Fitting Large SLRs

For SLRs with large battery compartments the lens may be too far from the bottom of the camera to align with the optic. You can flip the camera plate behind the rails to get more separation. You can use a second camera plate attached to the top of the balance bracket to get more spacing for the tripod.

The camera bracket is a Cavision RPMD90. You can purchase these from the EyeSee360 web store or any Cavision reseller.



Choosing a Tripod Head

Tripod heads should be sturdy enough to support the combined weight of camera, bracket and optic (5–10 lb. or 2–5 kg). They should also be compact and allow a 90° vertical orientation without having a handle visible in the image. We recommend either a single axis tilt head, such as the Manfrotto 234 Monopod Tilt Head, or a ball head with a 90° tilt movement such as the Manfrotto 486 Compact Ball Head.



Manfrotto 234
Monopod Tilt Head



Manfrotto 486
Compact Ball Head